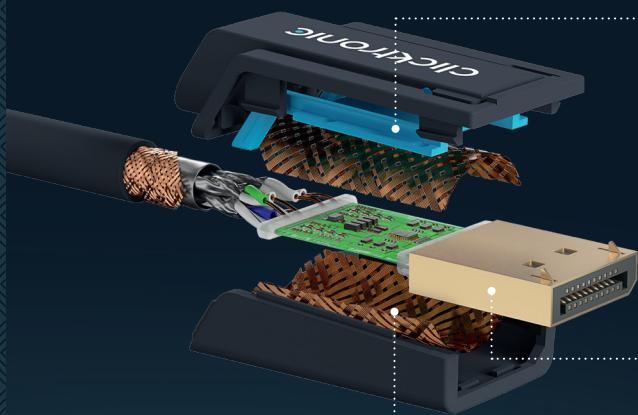


# ACTIVE DISPLAYPORT TO DVI-D ADAPTER CABLE

Smooth images in WUXGA or Full HD over up to 5 metres and many years. The reason: a strong plug, gold-plated connectors and a flexible triple shielded premium cable.

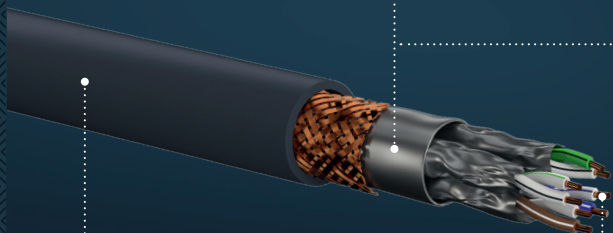


## A PLUG THAT PROTECTS AGAINST CABLE BREAKAGE

The plug of the Clicktronic DisplayPort to DVI adapter cable consists of three ABS and PVC parts, making it both flexible and robust: if you, for instance, pull the cable with a jerk, it absorbs some of the energy and protects the inner conductor.

## GOLD-PLATED CONNECTORS TO ENSURE A LONG SERVICE LIFE

To make sure that the connectors remain rust-free, they are coated with 24 carat gold. This prevents them from oxidising. Plus: Unlike many materials, gold is excellent at transmitting signals – for resistance-free transmission, completely without any interruptions.



## TRIPLE SHIELDED TO AVOID FLICKERING

No flickering, even if several cables run in parallel or the smartphone is lying right next to the cable: the triple shielding consisting of aluminium foil and copper braiding intercepts interfering signals. Even with stronger electromagnetic fields.

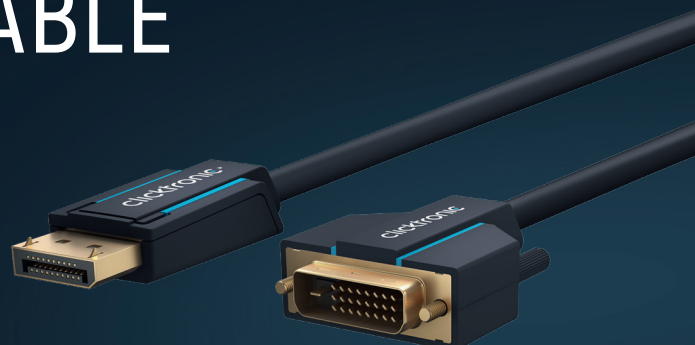
## A FLEXIBLE AND ROBUST PVC JACKET

The robust PVC jacket protects the Clicktronic DisplayPort to DVI-D adapter cable and keeps it flexible enough to bend around any corner – no matter how long it has spent in one position. The reason: the PVC does not absorb water, even in humid conditions. This means that the cable does not become porous.

## OFC INNER CONDUCTORS FOR BRILLIANT SIGNAL QUALITY

Pin-sharp images – even after years: the inner conductors made from 99.9% oxygen-free copper (OFC) are designed not to come into contact with oxygen. This means that they do not oxidise and they transmit signals excellently, just like on the very first day.

# ACTIVE DISPLAYPORT TO DVI-D ADAPTER CABLE



## HIGH RESOLUTION OVER LONG DISTANCES

Smooth streaming, presenting and gameplay: The Clicktronic DisplayPort to DVI-D adapter cable allows you to transmit pictures and videos from PC or laptop to TV, monitor or projector – over 1 to 5 metres and with a resolution of up to WUXGA (1920×1200) at 60 Hz and Full HD (1920×1080) at 144Hz. Important: The cable transmits in one direction – from the **Display-Port connector** ► to the ► **DVI connector**

## SECURE HOLD, OPTIMAL SIGNAL

The DisplayPort plug locks mechanically automatically, you can simply screw the DVI plug in place. This means the cable sits particularly securely in all sockets, the connection between all of the contacts is maintained perfectly and the transmission functions optimally – even when used with movable monitors. To remove, press the unlocking mechanism or unscrew the DVI-D plug.



INPUT



OUTPUT

## ALL ADVANTAGES AT A GLANCE

### HIGH RESOLUTION

From up to WUXGA (1920×1200) at 60 Hz and Full HD (1920×1080) at 144 Hz.  
IMPORTANT: The cable only transfers in one direction.

### SECURE HOLD

Thanks to the mechanical locking with an unlocking mechanism plus screws.

### BRILLIANT SIGNAL QUALITY

No oxidation thanks to an inner conductor made from 99.9% oxygen-free copper (OFC).

### NO FLICKERING

Thanks to triple insulation consisting of aluminium foil and copper braiding.

### FLEXIBLE AND ROBUST CABLE

Thanks to the PVC jacket, which can be bent optimally even after years. .

### STRONG PLUG

PVC and ABS ensure maximum flexibility in the event of a jerk on the cable.

### RUST-FREE CONNECTOR

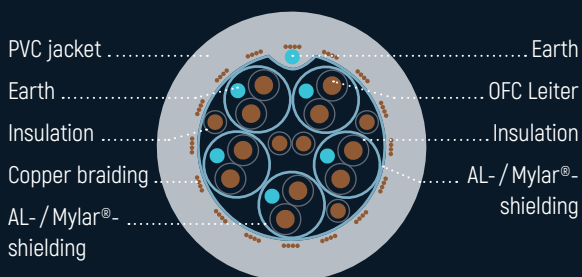
Even after years – thanks to a 24 carat gold coating.

# ACTIVE DISPLAYPORT TO DVI-D ADAPTER CABLE

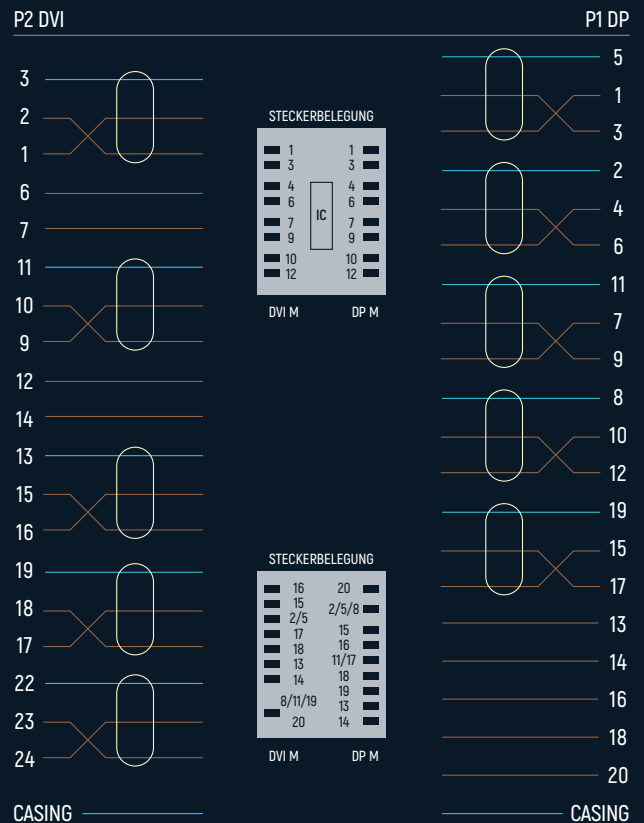
## SIGNAL TRANSMISSION

TRANSMISSION TYPES: digital video signals  
 MAX. TRANSMISSION RATE [Gbit / s]: 7.92 (1 - 5 m)  
 WAVE IMPEDANCE [ $\Omega$ ]: 100

## CABLE CROSS-SECTION



## CIRCUIT DIAGRAM



## SUPPORTED FORMATS

OTHER STANDARDS	Full HD (1080 i / p), HD ready (720 i / p), SDTV (480 i / p)
COLOUR SPACES	RGB / YUV

## PRODUCT DATA

CABLE LENGTH	Ø INNER CONDUCTOR	AWG	Ø OUTER JACKET
1 - 3 m	1 × 0.25 mm	30	6.0 mm
5 m	1 × 0.32 mm + 1 × 0.32 mm	28 + 30	7.3 mm

CABLE LENGTH	RRP	Packaged unit	SKU	EAN
1.0 m	24.99 €	1 / 15 / 30	70728	4040849707285
2.0 m	29.99 €	1 / 15 / 30	70729	4040849707292
3.0 m	34.99 €	1 / 12 / 24	70730	4040849707308
5.0 m	44.99 €	1 / 10 / 20	70731	4040849707315



SUBJECT TO CHANGE. MODEL SIMILAR. ALL BRAND NAMES ARE REGISTERED TRADEMARKS OF THEIR RESPECTIVE OWNERS.